

Component Replacement - electrical -



Xperia™ Z5 Compact
E5803, E5823

CONTENTS

1	Replaceable Components	3
2	Component Placing.....	5
3	Additional Repair info	7
4	Revision History	12

***For general information about electrical repair related issues, refer to
1220-1336: Generic Repair Manual - electrical***

Baking prior to repair is required, if the board have been exposed to air more than 12 hours from PWB package opening. Too long exposure time increase the level of moisture in PWB and the PWB could delaminate during repair process and result in direct or latent failures and reduce reliability.

The boards shall be baked in 125°C ±5°C for 4 hours.

Test after electrical replacement: refer to 1273-1772 Mechanical Test Instruction

All Electrical components are RLC level B, Reversed Logistic Classification, See the Spare Part Handling chapter in Mechanical/Generic Repair Manual 1220-1333.

Do not remove shield can lids (Heat pasta are added and RF performance will be damaged)

1 Replaceable Components

EXPLANATION OF ABBREVIATIONS USED IN THE COLUMN 'COMMENTS' BELOW

COMPONENT LOCATION

P = Primary side

S = Secondary side

REPAIR METHOD

HA = Hot Air (removal & mounting)

ST = Soldering Tool (removal & mounting)

HA/ST = Hot Air for removal - Soldering Tool for mounting

BGA = BGA Station

BH = Bottom Heater

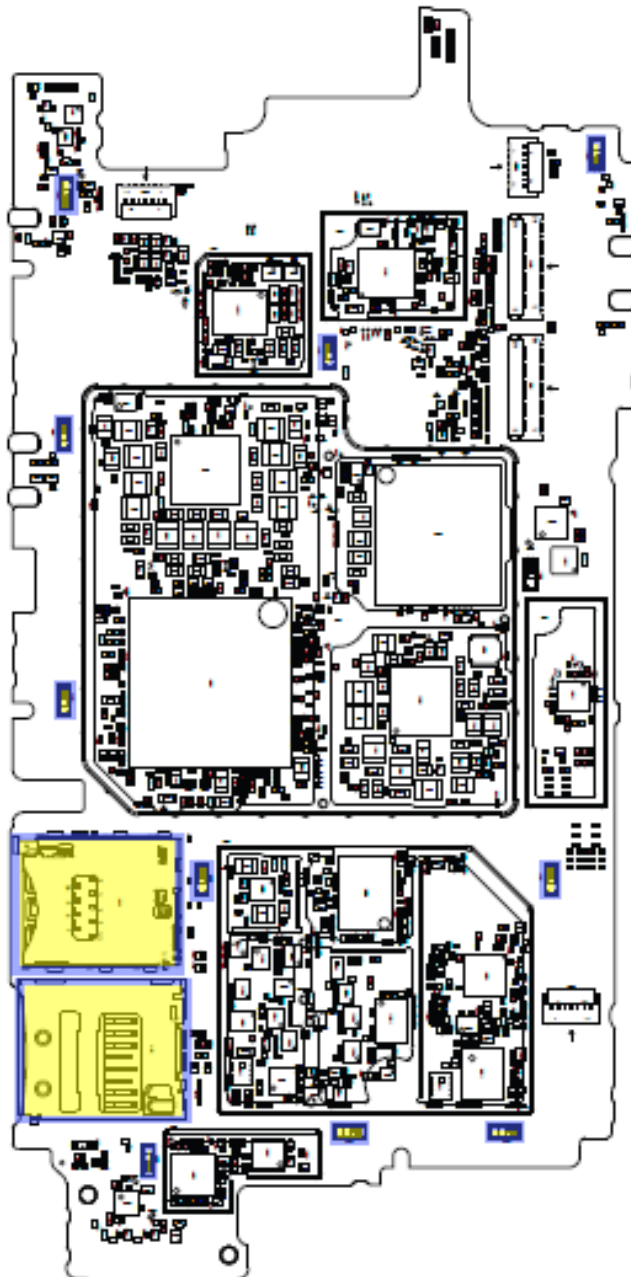
ADDITIONAL INFORMATION

⇒1 (2,3,4, etc.) = Proceed to 'Additional Repair Info' for further instructions in the indicated section(s).

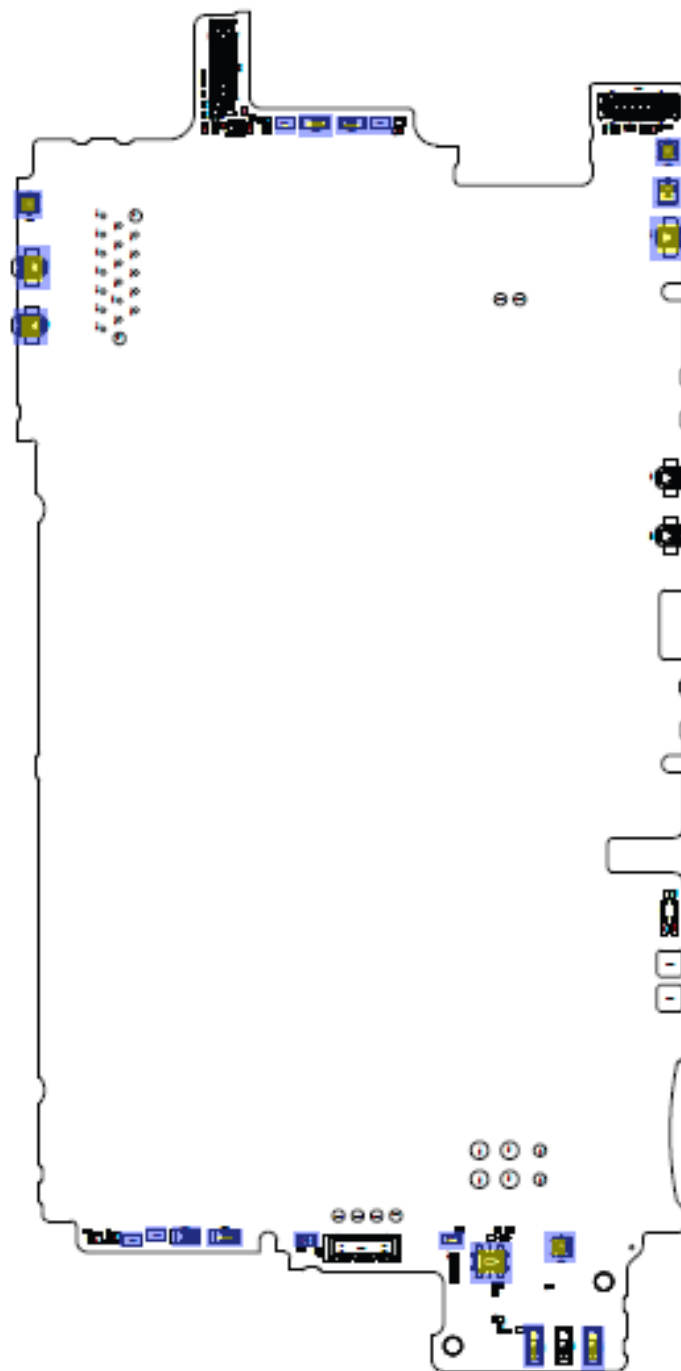
Position	Component	Part no.	Comments
CN1300	Conn BtB Plug 4p HIROSE/BM22	1281-9973	S HA+BH ⇒1
CN2602	Conn Leaf Spring Plug 1p WH : 2.6+-0.2	1294-5857	S HA+BH ⇒2
CN2613	Conn Leaf Spring Plug 1p WH : 2.6+-0.2	1294-5857	S HA+BH ⇒2
CN2674	Conn Leaf Spring Plug 1p	1294-5853	P HA+BH ⇒3
CN2675	Conn Leaf Spring Plug 1p	1294-8163	P HA+BH ⇒3
CN2676	Conn Leaf Spring Plug 1p	1294-5853	P HA+BH ⇒3
CN2677	Conn Leaf Spring Plug 1p	1294-5853	P HA+BH ⇒4
CN2678	Conn Leaf Spring Plug 1p	1294-5853	P HA+BH ⇒4
CN2679	Conn Leaf Spring Plug 1p	1294-5853	P HA+BH ⇒4
CN2680	Conn Leaf Spring Plug 1p	1294-5853	P HA+BH ⇒5
CN2681	Conn Leaf Spring Plug 1p	1294-5853	P HA+BH ⇒5
CN2682	Conn Leaf Spring Plug 1p	1294-5853	P HA+BH ⇒5
CN2684	Conn Leaf Spring Plug 1p	1294-5853	P HA+BH ⇒3
CN2800	Conn Leaf Spring Plug 1p Mid mount Type	1275-0410	S HA+BH ⇒6
CN2801	Conn Pogopin Plug 1p	1272-1414	S HA+BH ⇒7
CN2803	Conn Coax Receptacle 1p	1287-3442	S HA+BH ⇒8
CN2804	Conn Coax Receptacle 1p	1287-3442	S HA+BH ⇒9
CN3501	Conn Leaf Spring Plug 1p	1289-6405	S HA+BH ⇒10
CN3502	Conn Leaf Spring Plug 1p	1289-6405	S HA+BH ⇒10
CN3503	Conn Leaf Spring Plug 1p	1289-6405	S HA+BH ⇒11
CN3504	Conn Leaf Spring Plug 1p	1289-6405	S HA+BH ⇒11
CN4000	Card Conn SIM Nano	1278-7930	P HA+BH or BGA ⇒12
CN4100	Card Conn Micro SD	1281-9124	P HA+BH or BGA ⇒13
CN8000	Conn Leaf Spring Plug 1p Mid mount Type	1275-0410	S HA+BH ⇒14
CN8001	Conn Leaf Spring Plug 1p Mid mount Type	1275-0410	S HA+BH ⇒14
CN8003	Conn Coax Receptacle 1p	1287-3442	S HA+BH ⇒15
FL2202	Filter Ceramic Lo-pass 50.0 MHz 1608	1269-0526	S HA+BH ⇒16
L3506	100nH 5% 0603 0.22A	1000-1893	S HA+BH ⇒17
L3507	100nH 5% 0603 0.22A	1000-1893	S HA+BH ⇒17
L3508	100nH 5% 0603 0.22A	1000-1893	S HA+BH ⇒18
L3509	100nH 5% 0603 0.22A	1000-1893	S HA+BH ⇒18
R1306	Resistor 0.01 Ohm +/-1% 200.0 mW (1.6x0.	1238-2147	S HA+BH ⇒19

2 Component Placing

To access the Component Placing document, double-click the icon below.
Applicable for on-screen viewing only – icon not shown on hard-copies.



Primary side



Secondary side

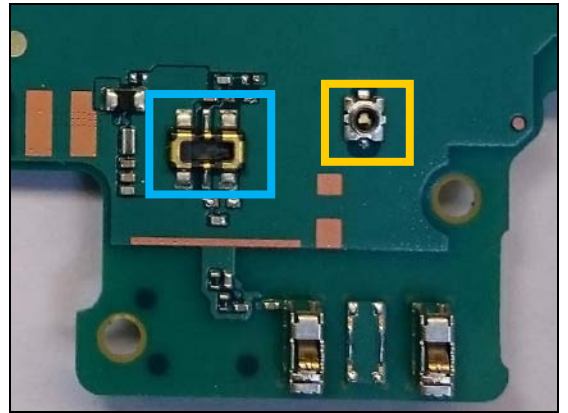
3 Additional Repair info

1

CN1300

Replace if mechanical damaged. (Phone dead or power off)

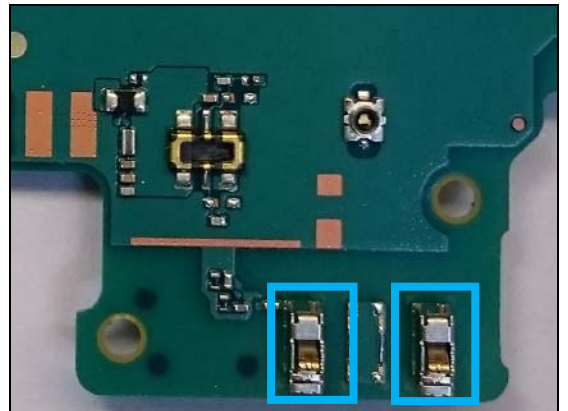
Protect the RF connector with capton tape!



2

CN2602, CN2613

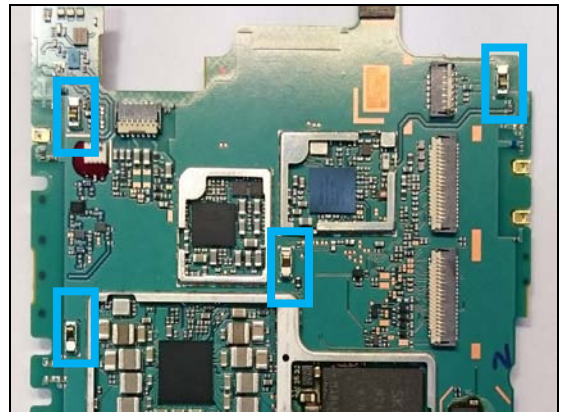
Replace if mechanical damaged (No or bad network, Main antenna)



3

CN2674, CN2675, CN2676, CN2684

Replace if mechanical damaged (Ground pins)

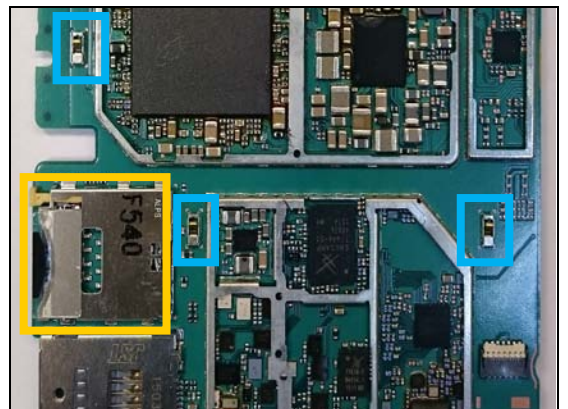


4

CN2677, CN2678, CN2679

Replace if mechanical damaged (Ground pins)

Protect the SIM connector with capton tape!



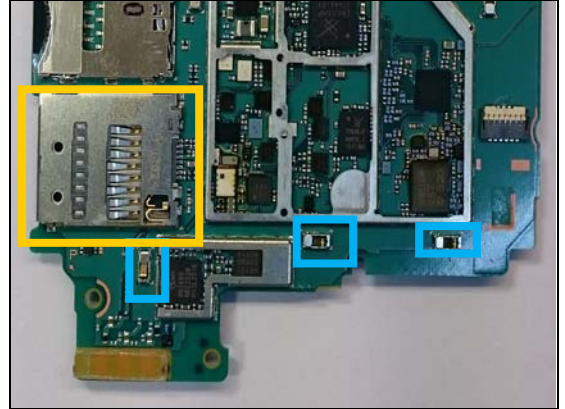
Repair Actions: Additional Repair Info

5

CN2680, CN2681, CN2682

Replace if mechanical damaged (Ground pins)

Protect the SD connector with capton tape!

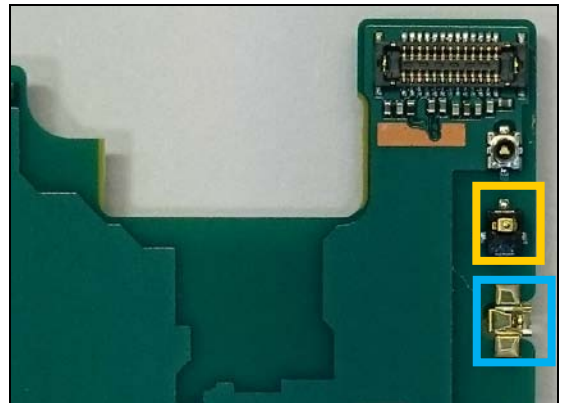


6

CN2800

Replace if mechanical damaged (No or bad network, diversity antenna)

Protect the connector with capton tape!

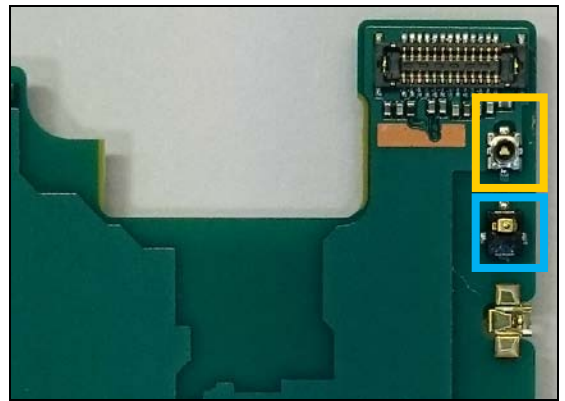


7

CN2801

Replace if mechanical damaged (No or bad network, diversity antenna)

Protect the RF connector with capton tape!

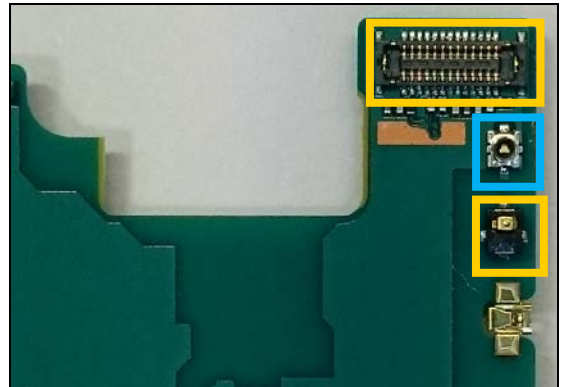


8

CN2803

Replace if open circuit 1-4 (No or bad network, diversity antenna)

Protect the RF connector with capton tape!

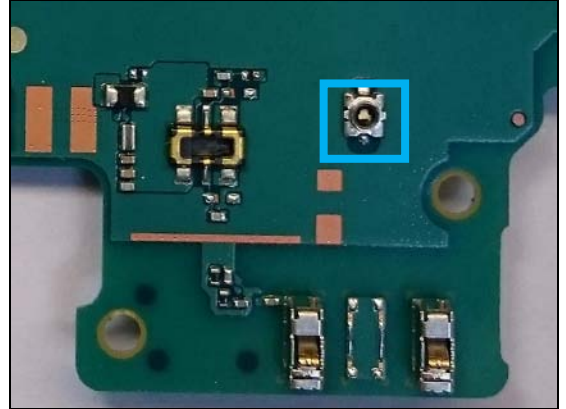


Repair Actions: Additional Repair Info

9

CN2804

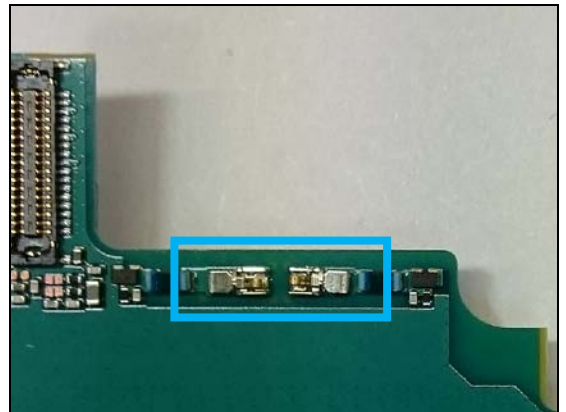
Replace if open circuit 1-4 (No or bad Network, main antenna)



10

CN3501, CN3502

Replace if mechanical damaged (No or bad Left / Top speaker)



11

CN3503, CN3504

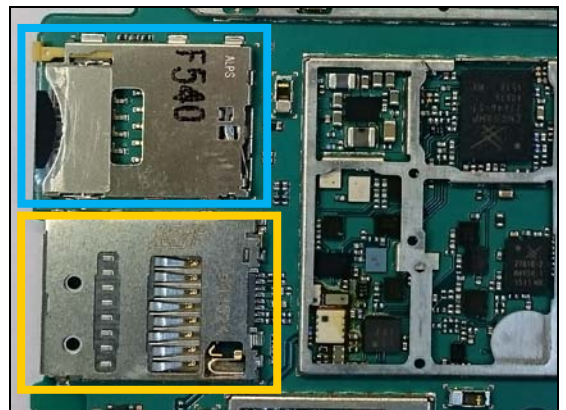
Replace if mechanical damaged (No or bad Right / Bottom speaker)



12

CN4000

*Replace if mechanical damaged (No network, restart, No SIM card inserted, NFC SIM problem, reset problem)
Protect the SD connector with capton tape!*

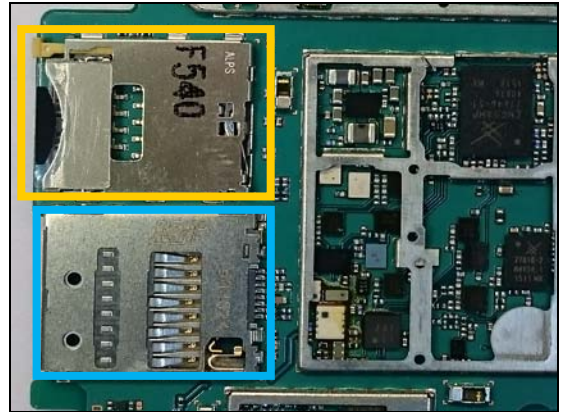


Repair Actions: Additional Repair Info

13

CN4100

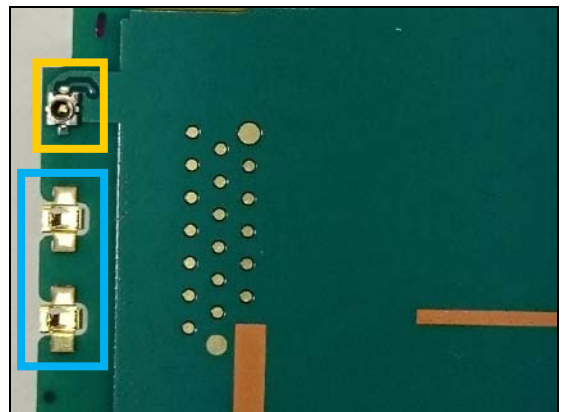
*Replace if mechanical damaged (No SD card)
Protect the SIM connector with capton tape!*



14

CN8000, CN8001

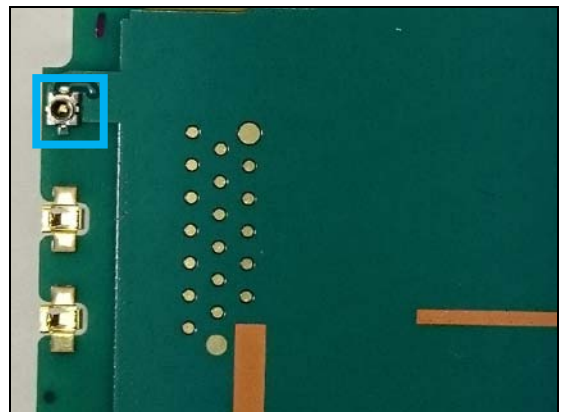
*Replace if mechanical damaged (No or bad WLAN / BT)
Protect the RF connector with capton tape!*



15

CN8003

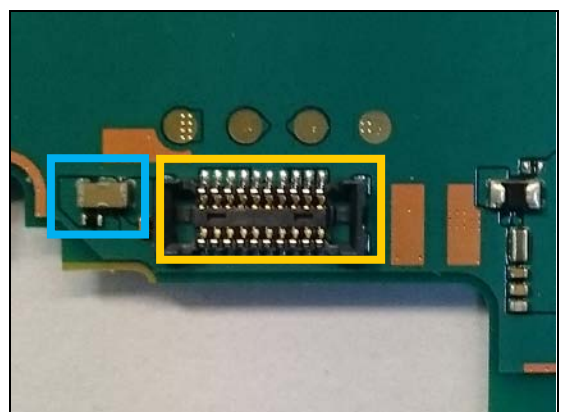
Replace if open circuit 1-4 (No or bad WLAN / BT)



16

FL2202

*Replace if not charging from USB connector.
Protect the BtB connector with capton tape!*

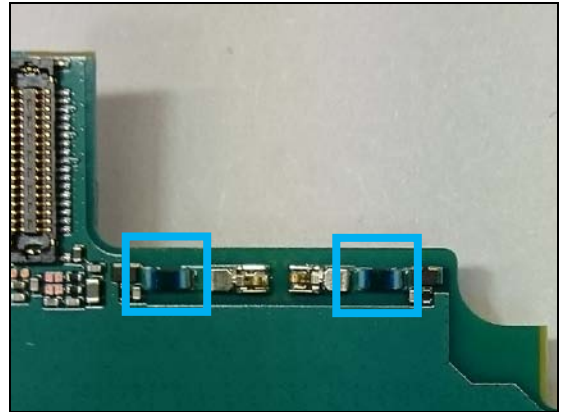


Repair Actions: Additional Repair Info

17

L3506, L3507

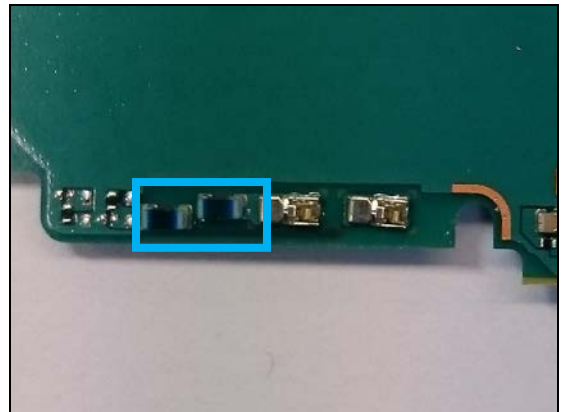
Replace if open circuit (No Left / Top speaker)



18

L3508, L3509

Replace if open circuit (No Right / Bottom speaker)

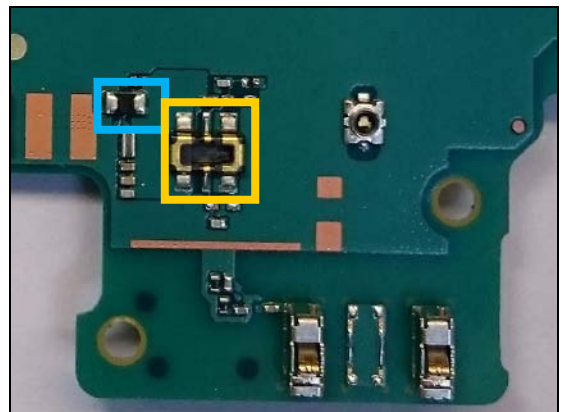


11

R1306

Replace if open circuit (Phone dead or power off)

Protect the BtB connector with capton tape!



4 Revision History

Rev.	Date	Changes / Comments
1	2015-09-10	Initial release
2	2015-09-25	Additional repair info added